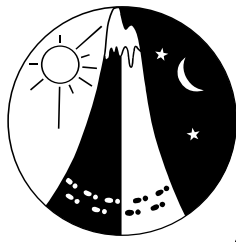




Ninghan Station junction
290.3m ht



The Wildflower Rogaine

12th August 2017 State Championships
24 Hour 12 noon start



Department of
Sport and Recreation

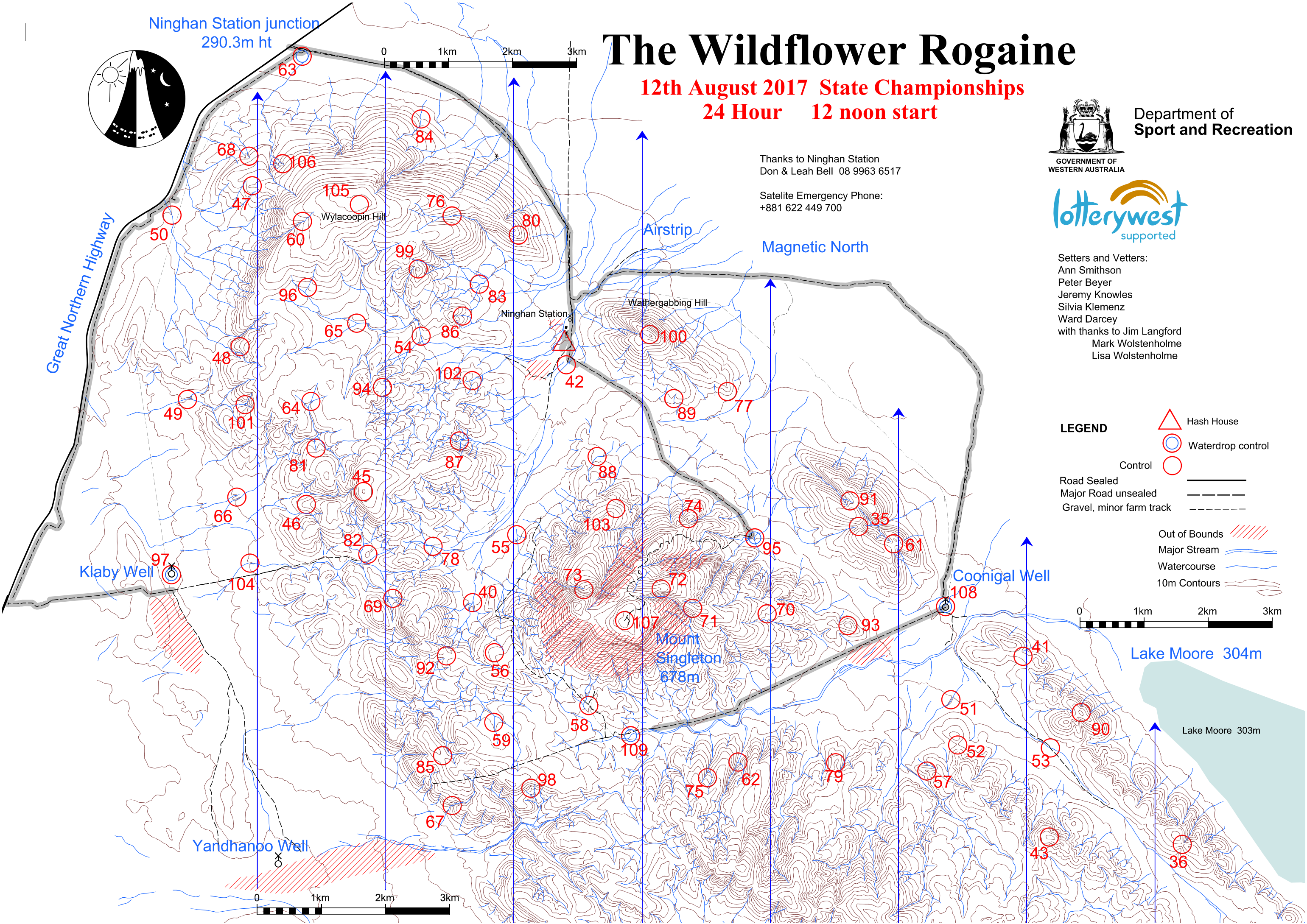
Thanks to Ninghan Station
Don & Leah Bell 08 9963 6517

Satellite Emergency Phone:
+881 622 449 700



Setters and Veters:
Ann Smithson
Peter Beyer
Jeremy Knowles
Silvia Klemenz
Ward Darcey
with thanks to Jim Langford
Mark Wolstenholme
Lisa Wolstenholme

Great Northern Highway



LEGEND



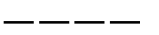
Control



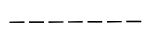
Road Sealed



Major Road unsealed



Gravel, minor farm track



Out of Bounds



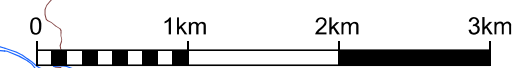
Major Stream



Watercourse



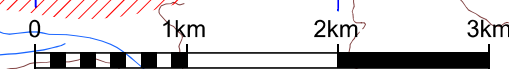
10m Contours



Lake Moore 304m

Lake Moore 303m

Yardhanoo Well



The Wildflower 24 hour Rogaine 12 August 20 Ninghan Station

Noon to noon

No.	Description	Points
35	The saddle	30
36	The saddle	30
40	The watercourse junction	40
41	The saddle	40
42	A watertank	40
43	The broad knoll	40
45	The broad knoll	40
46	The broad spur	40
47	The broad spur	40
48	The broad spur	40
49	The watercourse	40
50	The watercourse	50
51	The watercourse	50
52	The saddle	50
53	The watercourse track intersection, 20m at 105°	50
54	The watercourse	50
55	The watercourse junction	50
56	The broad spur	50
57	A rocky outcrop on the spur	50
58	A track junction	50
59	The watercourse	50
60	The watercourse	60
61	The saddle	60
62	The watercourse junction	60
63	The track bend, 70m at 135° Waterdrop	60
64	The watercourse junction	60
65	The watercourse junction	60
66	The broad spur	60
67	The watercourse	60
68	The watercourse bend	60
69	The watercourse junction	60
70	A watercourse in the gully	70
71	The spur (narrow ridge)	70
72	The spur (narrow ridge)	70
73	Bottom of an easily walked shallow gully (at 24° do wnslope), west of a steep rocky outcrop	70

No.	Description	Points
74	A rocky outcrop on the spur	70
75	The spur	70
76	The watercourse	70
77	The broad spur	70
78	The watercourse junction	70
79	A rocky knoll on the spur	70
80	The spur	80
81	The gully	80
82	The knoll	80
83	The watercourse junction	80
84	The watercourse	80
85	The saddle	80
86	The watercourse	80
87	The watercourse	80
88	The watercourse	80
89	The watercourse	80
90	The knoll, Lake Moore viewpoint	90
91	The head of the gully	90
92	The broad saddle	90
93	The knoll	90
94	A rocky outcrop on the broad spur	90
95	The watercourse junction Waterdrop	90
96	The watercourse	90
97	The well Waterdrop	90
98	The gully	90
99	The broad knoll	90
100	The broad knoll, Wathergabbing Hill viewpoint	100
101	The watercourse junction	100
102	The watercourse junction	100
103	The spur	100
104	The watercourse	100
105	The broad knoll, Wylacoopin Hill viewpoint	100
106	The rocky watercourse	100
107	The summit, the "Twin Towers", 20m at 340° from summit cairn, Mt Singleton viewpoint	100
108	The well Waterdrop	100
109	The oasis (a spring in the watercourse) (control 25m east of waterdrop downstream) Waterdrop	100

Important Information
Start/ Finish 12 noon Sunday
Briefing 11:45am Saturday
Hash House 5pm Sat. - 1pm Sun.
Sunset 5:44 pm Sat. Sunrise 6:43 am Sun. Moonrise 10.14pm Sat. Moonset 10.15am Sun.
Patrolled Roads. Indicated in grey on the map
Late Penalty 10 points per minute or part minute.
LATE (no points) After 12:30 Sunday
Controls Used 71
Total Points 4920

If you are injured, make your way to a water drop or a patrolled road and wait there for help